

How to switch on the Olympus xcellence system



1. Turn on the hardware with the main switch.



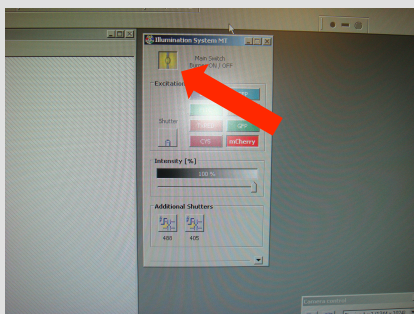
2. Switch on the camera by pushing the button at the camera control box. The indicator light has to be green (the light is red in standby mode).



3. Turn on the computer.



4. Wait 30 s upon the appearance of the desktop and start the xcellence software by double-clicking the xcellence icon.



5. Turn on the burner for fluorescence imaging.

Turn off when burner is not needed for longer than 30 min.